

Founding Members

Nine Founding Members in eight European countries are working together and have expressed their full commitment to E2B:

	Spain	General Contractor
	United Kingdom	Engineering
	France	General Contractor
	Italy	Engineering
	France	Energy and services
	Poland	General Contractor
	Netherlands	Lighting and appliances
	Sweden	Materials
	Germany	Heating and Renewables

Overall budget and financing

- Expected duration of E2B EI = 10 years
- Estimated budget = about 2 Billion euros
- Financing: European Commission (50 %) and Private sector (50%)
- These figures are presently considered as sound and reachable by the three concerned DGs from EC

Organisation

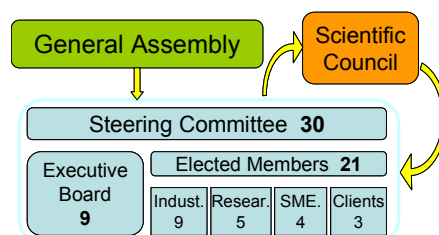
Main bodies are:

The *General Assembly* composed of all members

The *Steering Committee* entrusted with the Association management

The *Executive Board*, in charge of executing the decisions taken by the Steering Committee

The *Scientific Council*, advisory body to the Executive Board.



Communication

For any additional information please contact :

Acciona Infraestructuras: **Javier Mardaras** jmardara@acciona.es

Bouygues: **Claude Lenglet** c.lenglet@bouygues-construction.com

EDF : **Alain Marti** alain.marti@edf.fr

E2B EI website: www.e2b-jti.eu

Incorporation of new members to the E2B Association is now open in the E2B EI website via a simple application procedure

E2B - Energy Efficient Buildings



The European Construction Technology Platform (ECTP) approved, on December 23rd 2005, the vision for 2030 and the Strategic Research Agenda.

Its Implementation Action Plan, discussed with the European Commission in 2006, was definitely adopted on June 20th, 2007 by ECTP High Level Group.

The main deliverable is a proposal for the creation of a European Initiative on Energy Efficient Buildings - **E2B EI**. This initiative will contribute to the implementation of the “**European Economic Recovery Plan**”

Buildings are responsible of 40 % of total EU Energy consumption and 1/3 of GHG emissions during their construction and operation stages.

The overall objective of E2B EI is to deliver, implement and optimise building and district concepts that have the technical, economic and societal potential to drastically reduce the energy consumption and decrease CO₂ emissions due to existing and new buildings at the overall scale of the European Union. The E2B EI will speed up research on key technologies and develop a competitive industry in the fields of energy efficient processes, products and services, with the main purpose of reaching the goals set forth for 2020 and 2050 to address climate change issues and contribute to improve EU energy independence thereby transforming these challenges into a business opportunity.

Meetings and conversations have been maintained with other construction-energy related platforms such as ESTEP - European Steel Technology Platform, HFCP - Hydrogen and Fuel Cell Platform, PVTP - Photovoltaic Technology Platform, ESTTP - European Solar Thermal Technology Platform, SUSCHEM, Sustainable Chemistry, They fully support the E2B EI.

For the purpose of the creation of the E2B EI, meetings with different representatives of DG Research, DG TREN and DG INFSO have been carried out in order to explore the viability of the EI, to present its scope and to define its size, the funding that can be expected and the procedures for going ahead.

What kind of European Initiative?

The European Initiative will be an industry-led public-private partnership, equally funded and governed by industry and the European Commission.

Other stakeholders as the research community will contribute actively in its activities. The EI will closely collaborate with national governments to achieve common objectives:

- Very large scale research programs at short, medium and long term.
- Driven by the industry.
- Focused on clear technological and economic objectives.
- With long term, European wide perspectives

The private part of the partnership is an International Non Profit Industrial Association (INPIA), the E2B Association, created by nine Founding Members from the industry.

The E2B Association is an open and transparent organisation, capable to incorporate all the organisations accepting the statutes.

Why an EI on Energy Efficient Buildings?

Strategic importance of the topic:

- Buildings represent about 40% of all energy consumption in Europe and generate about 33% of Green House Gases
- New knowledge is needed on: nano-science, materials, Energy Efficiency, integration of renewable energies, indoor environment, storage technologies, building energy management systems, guidelines and methodologies for the design of energy efficient buildings, reliable simulation and prediction tools.
- Clear prospects of generating new added value products and services worldwide as deliverables for buildings and districts.
- Exemplary energy efficient renovations in particular domains such as schools, hospitals, social housing, offices, commercial...
- Gives to Europe a critical competitive advantage for increasing its growth potential and to fight the threat of delocalisation.

Existence of a market failure

Coordinated investments should be made at European level for the sake of efficiency of a very large industrial sector, still extremely fragmented:

- To bring to mass market affordable energy efficient solutions for new as well as existing buildings and districts.

- To solve technical difficulty in using existing technologies for renovation purposes.
- To increase the dissemination of projects results, and build up knowledge of the whole sector
- To integrate the customer and value chain requirements (performance, social, environmental and economical) and create new business models.

Concrete evidence of Community value added

The implementation of the SRA requires the achievement of a critical mass in terms of financial commitment involved and of required capacity for research. Community funding will be more effective due to an increased leverage on private investment funding.

Community instruments will play an important role in facilitating effective implementation of the SRA, in line with related policies, by ensuring adequate legislation, standards and public procurement procedures and International Property Rights management.

Community policy objectives in health, safety, environment and consumer protection will be facilitated by a co-ordinated approach at European level and greater co-operation between public and private players.

Substantial, long-term Industry Commitment

- The creation of E2BA, the International Non Profit Industrial Association around large companies acting in eight different European countries and in several domains of the construction is in itself a strong signal of the construction industry commitment.
- SMEs, research organisations and other bodies have expressed a strong interest in participating to E2B by first becoming members.
- The long-term commitment is part of E2B scope, accepted by all the members of the E2B Association. This scope extends well beyond the timescale of a framework program. It is presently estimated to ten years.

Recent actions

- A strong, clearly expressed commitment by nine Founding Members:
- Finalised statutes for E2B Association and legal existence of E2BA.
- Intensive contacts with EC representatives of DG Research, DG Tren and DG Info, leading to a clear support of these three DGs
- Reference documents allowing to present E2B objectives, extent and ambitions.
- Working Groups have been organised to define the E2B RTD roadmap.